

PROJECT TITLE

The Yadana Subsidence Campaign 1

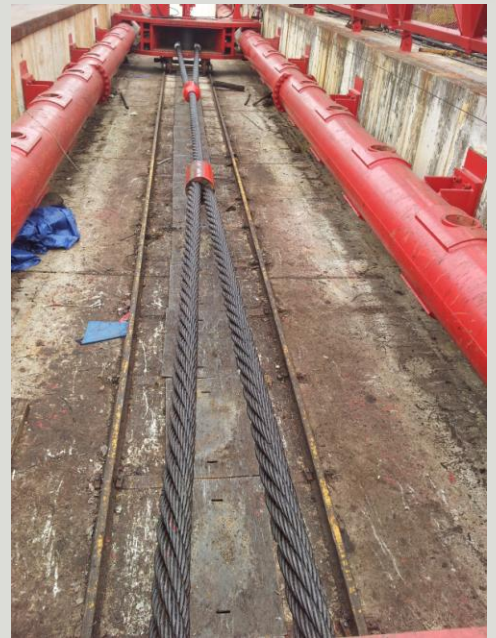
DATE

December 2012.

BACKGROUND

Upon completion of the hull conversion, the FPSO will be installed in the pre-salt Baleia Azul field in the state of Espirito Santo which is approximately 78km offshore in water depths of 1,400 meters.

The platform will be able to produce, process, store and dispose of oil with production capacity of 180,000 barrels of oil per day and the capacity to compress 6 million cubic meters of gas per day . There will also be water injection of 350,000 barrels per day and accommodation for 110 people.



THE YADANA SUBSIDENCE PROJECT (Myanmar) Heavy Lift Slings and Shackles

ITEMS

- 1 x KimLock Sling. 231mm dia x 47 mtr length. MBL 2473 MT. SWL 618.2 MT.
- 1 x KimLock Sling. 225mm dia x 30 mtr length. MBL 2254 MT. SWL 563.5 MT.
- 1 x KimLock Sling. 225mm dia x 25 mtr length. MBL 2254 MT. SWL 563.5 MT.
- 2 x KimLock Slings. 191mm dia x 35 mtr length. MBL 1687 MT. SWL 421.7 MT.
- 2 x KimLock Slings. 164mm dia x 61 mtr length. MBL 1236 MT. SWL 309 MT.
- 1 x KimLock Sling. 164mm dia x 35 mtr length. MBL 1236 MT. SWL 309 MT.
- 2 x KimLock Slings. 148mm dia x 66 mtr length. MBL 1034 MT. SWL 258.5 MT.
- 1 x KimLock Sling. 140mm dia x 38 mtr length. MBL 935 MT. SWL 233.7 MT.
- 2 x KimLock Slings. 140mm dia x 18 mtr length. MBL 935 MT. SWL 233.7 MT.
- 4 x KimLock Slings. 114mm dia x 66 mtr length. MBL 1003 MT. SWL 250.75 MT.

- 8 x KimFlex Slings. 128mm dia x 3 mtr length. MBL 593 MT. SWL 148.3 MT.

- 2 x KimSwage Slings. 114mm dia x 12 mtr length. MBL 902 MT. SWL 225.5 MT.

- 1 x Flemish Eye Sling. 74mm dia x 14 mtr length. MBL 352 MT. SWL 88 MT.
- 1 x Flemish Eye Sling, 74mm dia x 11.8 mtr length. MBL 352 MT. SWL 88 MT.
- 2 x Flemish Eye Sling. 60mm dia x 16.8 mtr length. MBL 247 MT. SWL 61.75 MT.
- 2 x Flemish Eye Sling. 60mm dia x 12 mtr length. MBL 247 MT. SWL 61.75 MT.
- 4 x Flemish Eye Slings. 40mm dia x 18 mtr length. MBL 111 MT. SWL 27.75 MT.

- 1 x Crosby G-2160 Wide Body Shackle, 800 MT
- 6 x Crosby G-2160 Wide body Shackles, 300 MT
- 2 x Crosby G-2140 bolt Type Anchor Shackles, 250 MT
- 8x Crosby G-2140 Bolt Type Anchor Shackles, 200 MT
- 2 x Crosby G-2130 Bolt Type Anchor Shackles, 120 MT

- 8 x Green Pin G4163 Bolt Type Anchor Shackles, 85 MT
- 4 x Green Pin G4163 Bolt Type Anchor Shackles, 55 MT

All manufactured and tested by KTL Offshore in Singapore. Witnessed and certified by ABS.



71 Tuas Bay Drive
Singapore 637430
www.ktlgroup.com

Tel: (65) 6543 8888
Fax: (65) 6545 2323
Email: ktl@ktlsg.com.sg

MEMBER OF



Your Global Wire Rope, Rigging and Mooring Partner